



系列射频同轴连接器  
SERIES SAA RF. COAXIAL CONNECTORS

SAA(1.0/2.3)系列产品是按照CECC22230和DIN47297的要求生产的一种直接锁紧式同轴连接器。具有体积小，重量轻，使用方便，可靠性高等特点，多用于要求插拔迅速，又对连接可靠有较高要求的通信及数据传输设备中。

Series SAARF coaxial connectors are one kind of push-pull self-latching lock-style connectors which developed according to the specification of CECC 22230 and DIN 47292. They have the advantages of small, light, easy mating and high reliability etc. they are mostly used for quickly pushing or pulling equipment of transmission and data transferring where require high reliability.

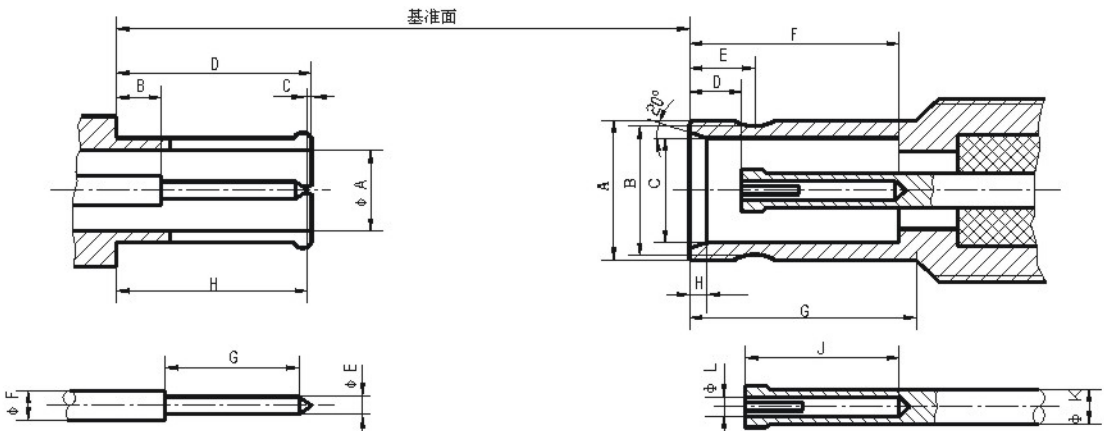
## 主要技术特性

## KEY PERFORMANCE

温度范围 Temperature range	-65 ~ +155℃	绝缘电阻 Insulation resistance	≥1000MΩ	
特性阻抗 Characteristic Impedance	50Ω	介质耐压 Dielectric Withstanding voltage	750V(rms)	
频率范围 Frequency range	0 ~ 4.8GHz	电压驻波比 VSWR	直式 Straight	≤1.25
工作电压 Voltage rating	250V(rms)		弯式 Right angle	≤1.40
接触电阻: Contact resistance	中心导体 Center conductor	寿命 Durability		500 Cycles
	外导体 Outer conductor			

## 头部配合尺寸

## SAA INTERFACE MATING DIMENSIONS



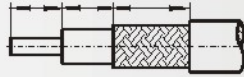
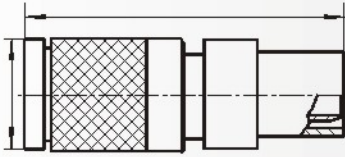
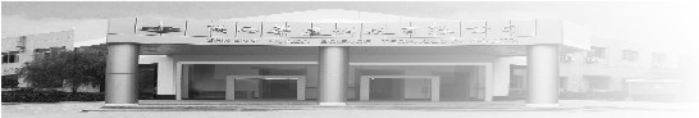
	FLUG(mm)	
	最小值	最大值
A	2.30	2.35
B	—	1.15
C	0.10	0.50
D	5.40	5.70
E	0.49	0.52
F	0.97	1.00
G	4.20	4.30
H	5.30	5.50

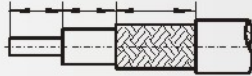
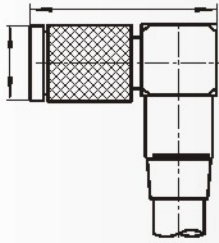
	JACK(mm)	
	最小值	最大值
A	4.03	4.15
B	3.53	3.60
C	3.00	3.06
D	1.15	1.75
E	1.60	1.90
F	5.80	5.90
G	6.40	6.50
H	0.50	0.60
J	4.45	4.55
K	0.97	1.00

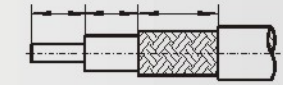
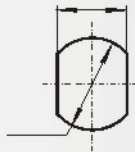
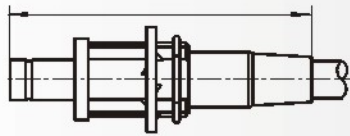
### 材料与涂覆:

壳体: 黄铜镀硬金  
弹性接触件: 铍青铜镀硬金  
绝缘体: 聚四氟乙烯

插针: 黄铜镀硬金  
插孔: 铍青铜镀硬金  
压接套: 铜合金镀镍



--	--

